

28 varieties The flexible kiosk printer

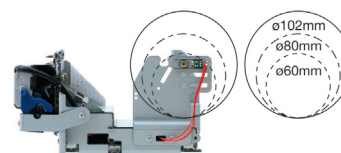


Horizontal solution

Most Flexible

The unique PMU2200/2300 series offers 28 different varieties to install the paper. This makes it the most flexible kiosk printer in the market. Ready for installation without customisation.

3 Different Paper Roll Sizes



The PMU2200/2300 can be operated with 3 different paper roll sizes.

Wide Operating Temperature

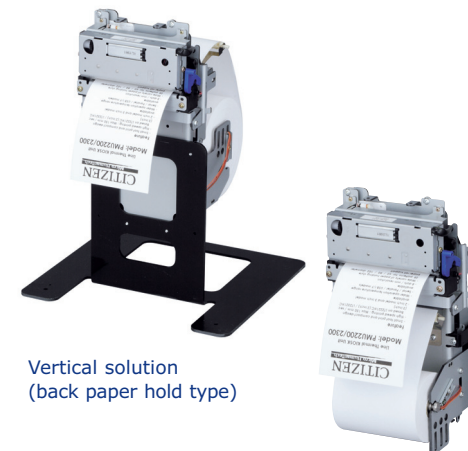
Operating in temperatures between -20°C up to 60°C the PMU2200/2300 is suitable for indoor as well as for outdoor applications.

PMU2200II/2300II

POS

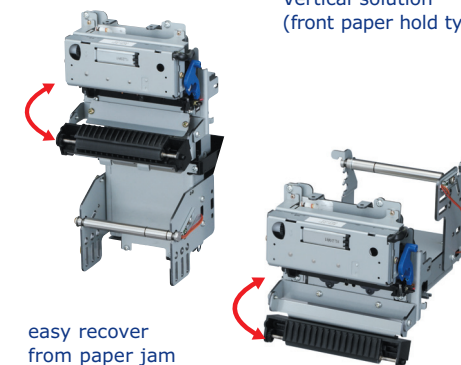
Applications

- Kiosk
- Weigh scales
- POS
- Industrial machine
- ATM



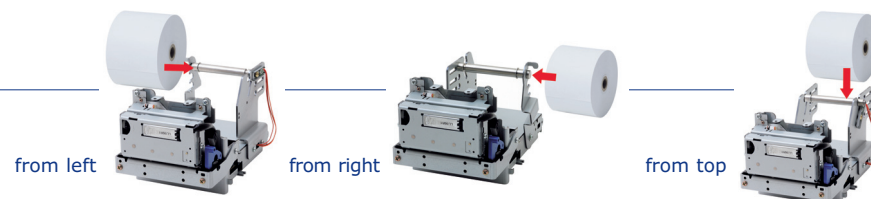
Vertical solution
(back paper hold type)

Vertical solution
(front paper hold type)



easy recover
from paper jam

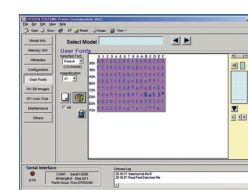
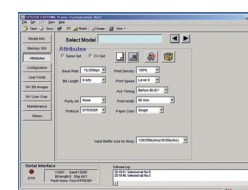
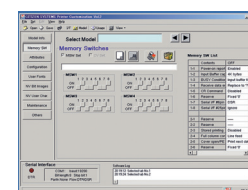
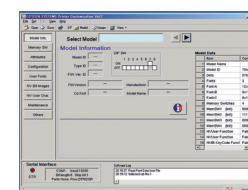
Paper insert



Specifications

Model	PMU2200	PMU2300
Printing method	Line thermal dot printing	
Paper width	58mm	80mm
Dot pitch	8 dots/mm (203 dpi)	
Printing speed	Max. 150mm/sec (1,200 dot lines/sec)	
Number of columns	Font A: 36 columns Font B: 48 columns Font C: 54 columns Kanji Font A: 18 columns Kanji Font C: 27 columns	Font A: 48 columns Font B: 64 columns Font C: 72 columns Kanji Font A: 24 columns Kanji Font C: 36 columns
Character size (WxH)	Font A: 1.50 x 3.00mm (12 x 24 dots) Font B: 1.13 x 3.00mm (9 x 24 dots) / Font C: 1.00 x 2.00mm (8 x 16 dots) Kanji Font A: 3.00 x 3.00mm (24 x 24 dots) / Kanji Font C: 2.00 x 2.00mm (16 x 16 dots) (As the space inside character font is included, actual character is smaller than that in the above table)	
Character table	Alphanumeric, International character set (12 characters x 16 countries) Code page 437, 850, 852, 857, 858, 860, 863, 864, 865, 866 WPC1252, Katakana, Thai Code 18, Kanji (JIS Level 1, Level 2), Kana, JIS C 6226-1983	
User memory	256 K bytes (User-defined characters and created logo can be registered.)	
Barcode type	UPC-A/E, JAN(EAN), 13 columns/8 columns, ITF, Code39, Code128, CODABAR, Code93	
Logo registration/print	Capable of registering user-defined characters print and logos into flash memory	
Line spacing	4.23mm (1/6 inch); can be set by a command	
Paper Width	58mm	58mm, 60mm, 80mm
Thickness	PMU2xxx: 0.065 – 0.105mm, PMU2xxxA: 0.110 – 0.150mm	
Recommended paper	TF-50KS-E-2D, TF62KS-E (Nippon Paper Industries)	
Interface	Serial (RS-232C compliant), Parallel (IEEE12184 compliant) or USB	
Input buffer	4K bytes or 45K bytes	
Sensors	Paper near end sensor, Platen open sensor / Paper near end sensor (adjustable) (Photo interrupter): Option / Black mark sensor (Photo interrupter): Option	
Input power	Input voltage: DC 24V± 7% / Current consumption: 1.9A (peak 6A) * Option: AC adapter 35AD1 or equivalent	
Power consumption	100W	
Weight	1.0kg	1.1kg
Dimensions (WxDxH)	101x179x96mm	118x179x96mm
Operating environment	-20°C ~ 60°C, 35 ~ 85%RH	
Storage environment	-25°C ~ 65°C, 10 ~ 90%RH	
Reliability	Thermal head: 100,000,000 pulses or 100 km / Auto cutter: 1,00,000 cuts	
EMC and safety standards	UL, C-UL, FCC class A, TUV, GS, CE marking	

Customization Software



Features



- Small foot print and compact design
- 150mm/sec high-speed printing
- 2 inch model (PMU2200) and 3 inch model (PMU2300) available
- Cutter (full/partial)
- Wider operation temperature range -20°C ~ 60°C
- Easy recovery from paper jam and easy head cleaning owing to removable head design
- Serial/Parallel/USB/ types available
- 8 dots/mm resolution
- Wide variety of paper holding style 28 patterns for 60/80/102mm diameter paper roll support
- Paper thickness up to 0.150mm (Option)
- Driver: Win 2000/XP/VISTA/ 2003 Server

Type Classification

PMU 2 2 0 0 -RS U P -8 L 2
1) 2) 3) 4) 5) 6) 7) 8) 9) 10)

- Mechanism mounted**
2: LT-2221 (2-in. mechanism)
3: LT-2321 (3-in. mechanism)
- Paper width**
0: 58mm (with 2-in. mechanism/80mm (with 3-in. mechanism)
1: 60mm (with 2-in. mechanism)/60mm (with 3-in. mechanism) * With guide for 60-mm paper
- Base style**
0: Horizontal (Mechanism used: LT-2X2XV) / 1: Vertical front-mount (Mechanism used: LT-2X2XH) / 2: Vertical back-mount (Mechanism used: LT-2X2XV)
- Special mechanism**
No mark: Standard
A: Thick paper
- Interface**
PA: Parallel
RS: Serial
UB: USB
(Virtual COM)
- Destination (CG+RS I/F screw)**
U: US/Europe/Other
J: Japan
- Sensor (PNE/Black Mark)**
* Dual indication permitted.
No mark: Without sensor
P: PNE sensor / M1: Black Mark (Left)
M2: black Mark (Right)
- Maximum paper diameter**
6: 60mm
8: 80mm
1: 102mm
- Direction of paper insertion**
L: Insert from left (Side without platen open lever) / R: insert from right (Side with platen open lever) / T: Insert from top (Hold both sides, paper diameter fixed at 102mm)
- Paper holder position**
1: A bit (One hole, toward left)
2: Standard (2 holes, toward left)
3: A bit far (One hole, toward right)
4: Far (2 holes, toward right)



www.logiscenter.com
902 050 030



www.logiscenter.it
02 479 216 97



www.logiscenter.de
info@logiscenter.de



www.logiscenter.pt
308 800 842

About LOGISCENTER

Grupo Logiscenter is the leading provider in Europe of automatic identification and data capture equipments. Our products include barcode printing and reading devices, mobile computing devices, wireless access points, identification cards, and consumables.

Reasons to work with us

Our customers come first. Our objective is not only selling our products but also holding a long-lasting relationship with our customers, based on the benefits and advantages we create for you and your company.

The best brands. We offer products from the best manufacturers worldwide.

Expert technical support team. Our support staff are experts in the products we sell. But not just the products, they can tell you the best solution for your particular problem or need.

Largest stock. We have a permanent stock of more than 12,000 products.

Same-day shipping. For all orders placed and confirmed before 16:00 on working days.

Best prices. With Logiscenter, you can be sure that you are paying a fair price for your products we will not overcharge you.

Easy returns. Damaged or defective products can be returned easily, for an exchange or reimbursement.

Solutions for: Industry • Consumer • Mobility Transportation and Logistics • Retail • Health



Label printers



Barcode readers



Data terminals & PDA



PVC card printers



RFID



Consumables
(labels, ribbons, PVC cards)

Our Brands



MOTOROLA



Intermec®

Honeywell®

DATALOGIC™



datamax • o'neil

Metrologic

LXE

EPSON®

elo

star

unitech

PRINTRONIX

symbol®



All Brands
Technical Service